



Introducing the New Holland WORKMASTER 50-70

LEAN & MEAN



Category: TRACTORS
Series/Model: Workmaster 50-70
Document: ATA-10739-16
Date: February 2016

TRACTORS

This is a sales education document
not to be used for advertisement

Key Features



- New Common Rail, 3-cylinder turbo charged FPT engine
- Tier4B compliant via PM Catalyst System
 - Fully automatic
 - No additional fluids
 - No loss of power or need to stop work during regeneration
- Synchronized Shuttle and 8x8 transmission on ALL models
- Updated styling
- Standard comfort features; cup holder, toolbox, retractable seat belt, 1st rear remote with float/detent
- More factory installed options; loader ready (with subframe, mid mount valve, joystick, and grill guard) vertical exhaust, 2nd remote
- Straight rear axle for superior strength and durability
- One-piece hood on a gas strut makes for easy serviceability
- Independent steering pump allows for effortless operation even when the tractor is under load
- 11.9gpm (45L/min) implement pump capacity makes for extremely fast cycle times.
- Category I/II 3-point with telescoping stabilizers, flex link ends, and drawbar standard
- 2701lbs (1125kg) 3-pt lift capacity
- Independent rear PTO with 540e Economy PTO optional
- Available with AG or Industrial tires
- New loaders with improved visibility, strength, and design
- Lean and Mean since the 1960s



New Holland WORKMASTER 50-70

WORKMASTER Utility Tractors are known for their dependability and value, and the new WORKMASTER 50-70's carry on that tradition. New styling, new features, and to meet Tier 4B requirements a new FPT Common Rail Engine and PM Catalyst have been added. Built tough and easy to afford, the WORKMASTER 50-70 is your preferred tractor thanks to its versatility and easy operation

LEAN & MEAN

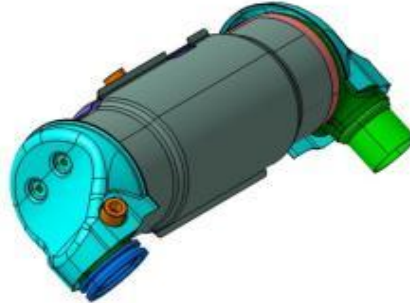


Common Rail Engine:



- 2.2L, 4-stroke, 3-Cylinder, turbo charged FPT Engine (Model FPT-R753)
- Common Rail, direct fuel injection system for maximum fuel efficiency
 - Reduces exhaust emissions and lowers engine noise
- More torque for increased performance. You can operate at lower engine speeds for better fuel efficiency
 - WM50=180 ft-lbs of torque
 - WM60=208 ft-lbs of torque
 - WM70=246 ft-lbs of torque
 - Peak torque and peak power meet at 1800RPMs
 - More torque means that the WORMASTER 50-70 can pull through tall wet grass with a rotary cutter or drive the loader bucket into a pile with ease at lower engine RPMs

Tier 4B Emission Process – PM Catalyst



- Combination of an internal Exhaust Gas Recirculation (EGR) valve to control Nitrogen Oxides, and a **PM-Catalyst** to capture and manager the Particulate Matter (PM) in the exhaust system
- The PM-Catalyst has two unique sections
 - **Diesel Oxidation Catalyst (DOC)**
 - Chemically performs an oxidation process on the exhaust system turning Nitrous Oxide (NO) into Nitrogen Dioxide (NO₂)
 - **Highly efficient Flow Through Filter (FTF)**
 - Open flow passages that capture PM while allowing exhaust gases to pass through, keeping the back pressure low, irrespective of the soot loading



Gas Inlet Side

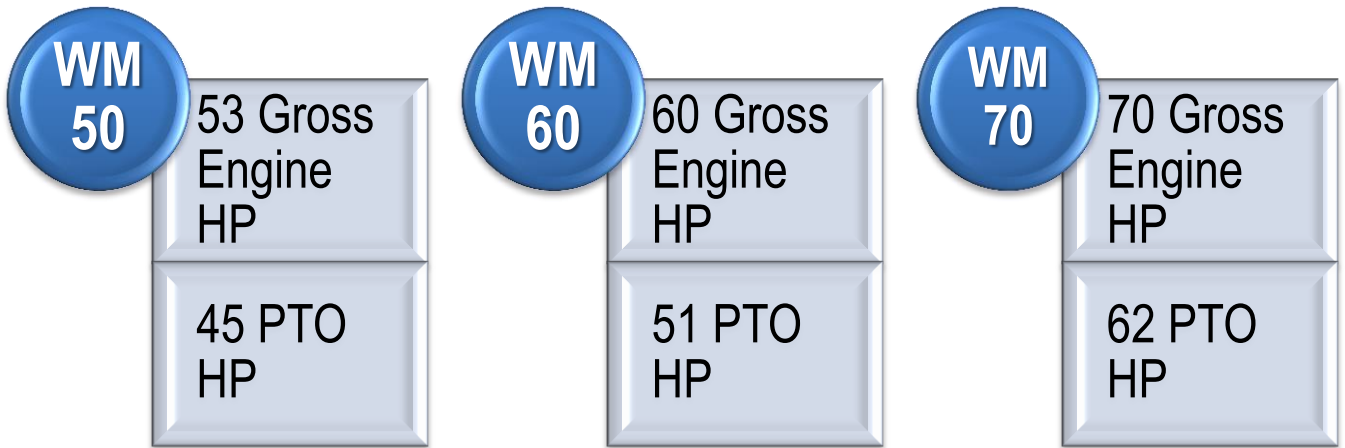


Gas Outlet Side

Benefits of a PM-Catalyst

- PM is continuously regenerated with the help of NO₂ produced by the DOC
- Since there is no DPF, there is no risk of plugging or need to regenerate the filter to keep it working
- No operator intervention required or fuel efficiency deterioration due to regeneration
- No additional fluids, warning lights, or increase in exhaust back pressure
- Works very similar to a catalytic converter used in the auto industry

Model Line-up/Engine:



	WM 50	WM 60	WM 70
Make	FPT		
Model	FPT-R753		
Emission Level	4B Final		
# Cylinders/Aspiration	3 / Turbo		
Displacement (cu in/liter)	136 (2.2)		
Rated Speed (RPM)	2600		
Torque Rise	24%	27%	28%
Fuel System Type	Direct Injection / Common Rail		
Injection Pump Make	Bosch		
Cold Start Aid	Glow Plug		
Air Cleaner	2-stage		
Fuel Tank Capacity (gal/liter)	13.8 / 54.5		



Tier 3, WORKMASTER 55



Tier 4B, WORKMASTER 60

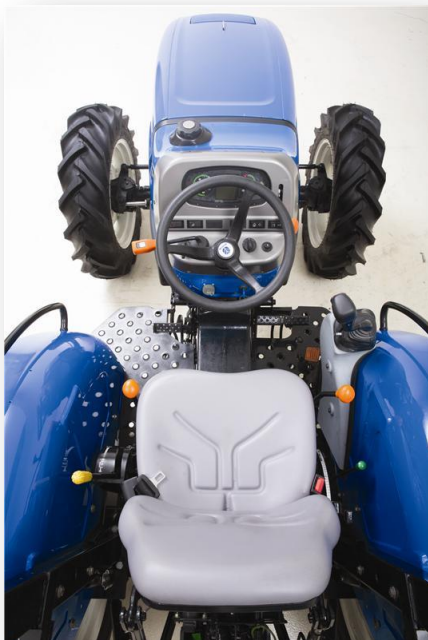
- Updated styling featuring New Holland “Cat’s Eye” Lighting
- Better rear bonnet integration; more rubber tubing to keep the hood from rubbing against the bonnet
- Updated decal package to coincide with the rest of the New Holland tractor line

Standard Comfort Features:

- Cup Holder
- Toolbox (attached to ROPS)
- Retractable Seat Belt
- 1st Rear Remote with float and detent

Other New Features:

- R4 Tire Option
- 540e “economy” PTO
- Factory Loader-Ready option
- Factory installed vertical or horizontal exhaust



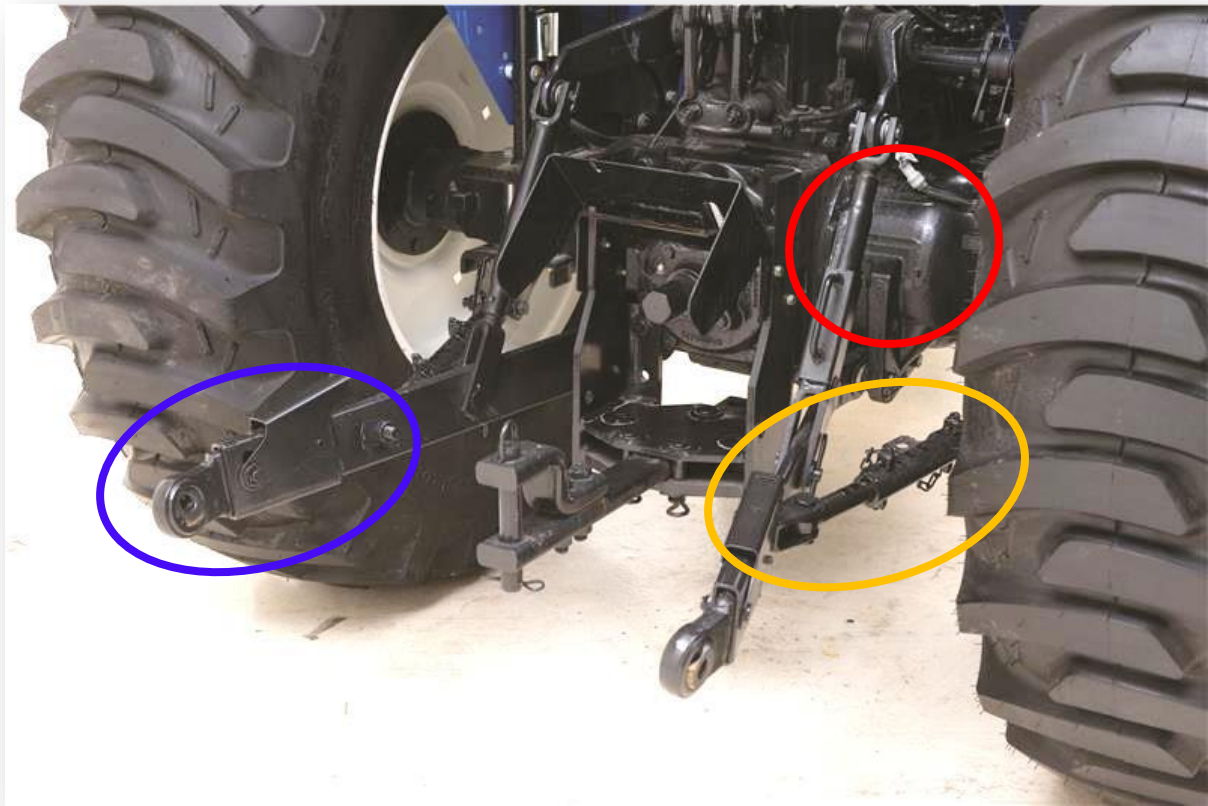
Transmission

- 8x8 Transmission with Synchronized, **column mounted, mechanical shuttle**
 - (4) Synchronized gears with automotive style “H” pattern
 - (2) Non-synchronized ranges
- 11” Traction Clutch
 - Organic on WM50/60
 - Cerametalic on WM70

Front Axle

- 2WD option with adjustable front axle and rear rims
- 4WD option with mechanical engagement, front drive shaft shield, and adjust front and rear rims
 - Gear Box Ratios specific to R1 and R4 tires
 - Interchange information in ASIST; search “exchanging R4 tires”
- Limited slip, front differential lock





Rear Axle

- Heavy-duty, cast iron
- **In-board Planetary Final Reduction**
 - Stronger than previous out board/bull gear design, which is dated technology
- 7936lb/3600kg towing capacity
- Mechanical Rear Differential Lock, foot actuated
- Multi-plate Mechanical Wet Disc Brakes

3-Point Linkage / Drawbar

- Combined Category I/II ball ends
- **Flexible Link Ends**
- **Telescoping Stabilizers**
- Flat Swinging Drawbar
- Draft Control
- 3307lbs/1500kg Lift Capacity @ Ball Ends
- 2701lbs/1125kg Lift Capacity 24" Behind Ball Ends

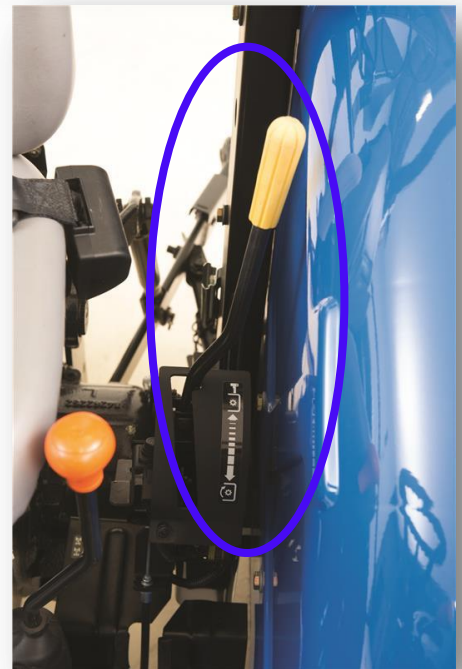


PTO

- Independent, 540 rpm PTO
- **Single Lever, Mechanical Engagement**
- Flip-up PTO Shaft Guard
- 11" Organic PTO Clutch
- 6 Spline Shaft

Optional 540e Economy PTO

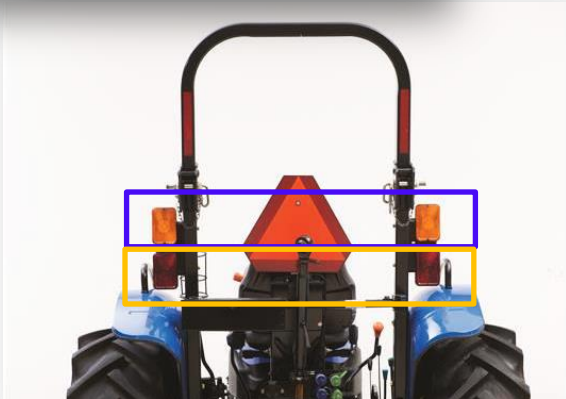
- Factory Installed Option
- Single Level, Mechanical Engagement
- Ideal for lighter PTO applications





Lighting

- (2) Halogen Headlights
- (2) Halogen Corner Work Lights
- **Tail Lights / Brake Lights Standard**
- **Turn Signals / Flashing Warning Lights Standard**



Electrical

- 12-volt, 720 CCA Battery
- 75amp Alternator
- 7-pin Outlet – for trailer/implement lighting
- Electric engine shutoff



Instrumentation

- Digital/Analog Display
 - Same display that is used in PowerStar
- Warning Lights
- Glow Plug
- Engine Temperature
- Fuel Gauges
- Tachometer
- Hour Meter





Serviceability

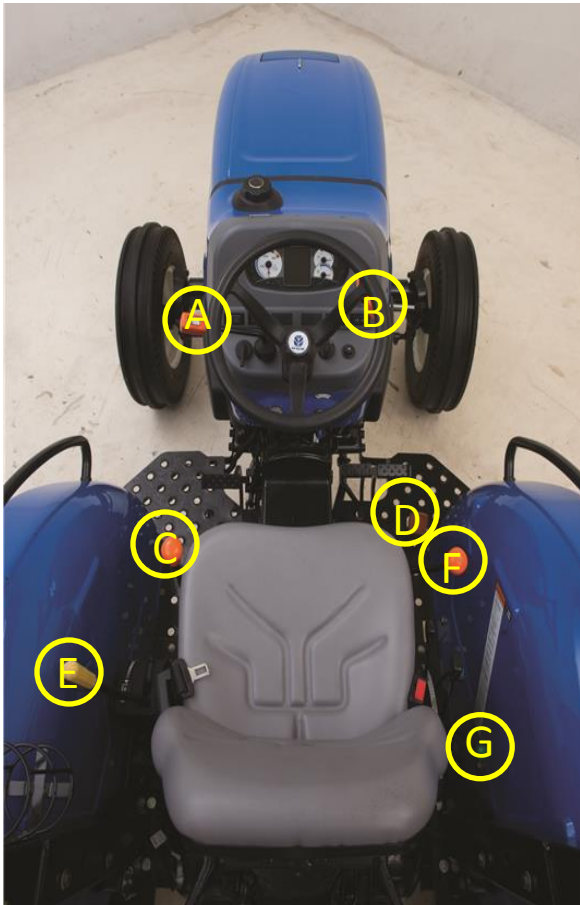
- One-piece hood on a gas strut
- No side panels/shields to remove to reach common access service points
- Mechanical fuel injection pump
- **2-stage air filter with dual element control**
- Fuel sediment filter
- Engine oil check dipstick has been redesigned to make it easier to check oil level even when loader is attached



Hydraulic System

- Open center hydraulic system
- Independent steering and implement pumps means that hydraulic flow is never compromised
 - Implement Pump Flow
11.9gpm/45lpm
 - Steering Pump Flow
5.5gpm/21lpm
- Hydrostatic Power Steering
- **1st remote standard with float/detent**
- **2nd remote optional from factory**





- A – Shuttle
- B – Hand Throttle
- C – Range Lever
- D – Foot Throttle
- E – PTO Engagement
- F – Gear Shift
- G – Remote



Range Lever



Shuttle



Gear Shift

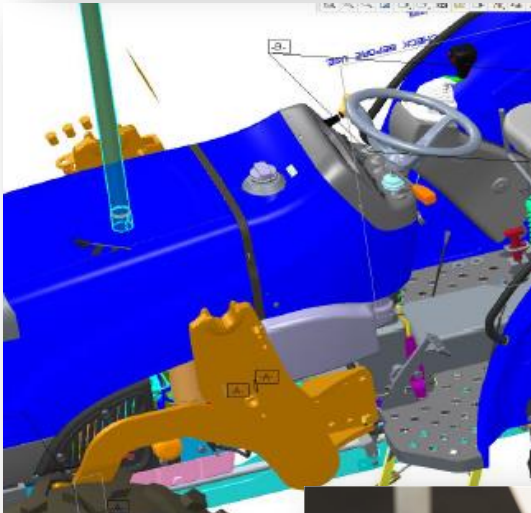
Operator's Station

- Straddle Deck Configuration
- Perforated deck with non-slip tread makes for easy maintenance
- Vinyl Seat with Operator's Presence Sensor
- Seat is on an inclined plane for comfort and best-in-class forward and backward visibility
- 2-post foldable ROPS
- Retractable Seat Belt
- Cup Holder and Toolbox
- Controls are positioned around seat area making for easy and ergonomic reach
- H-pattern on gear shift mirrors automotive shifting making operation effortless



Tire Options

- R1 Ag Tires Standard
 - WM50 13.6x28
 - WM60-70 14.9x28
- R4 Industrial Tire Option
 - All Models 18.4x24
- More tire options to meet growing customer demand



Loader Options

- Factory Loader Ready Option Includes:
 - Mid Mount Valve
 - Loader Mounts
 - Grill Guard
 - Joystick
- Order these installed from the factory to keep installation/shop costs down for the customer





600TL Series Front Loader

	611TL	621TL	616TL	626TL
Loader Type	NSL	NSL	MSL	MSL
Lift Height, in (mm)	112 (2850)	119 (3030)	115 (2920)	122 (3110)
Lift Capacity 59" (1.5M) @ 800mm From Pivot Point, lb (kg)	2,359 (1,070)	2,778 (1,260)	2,623 (1,190)	3,130 (1,420)
Breakout Force @ 800mm in Font of Pivot Pin	2,998 (1,360)	3,086 (1,460)	3,130 (1,420)	3,527 (1,600)
Bucket Rollback Angle	27°	27°	32°	45°
Bucket Dump Angle	43°	42°	46°	46°

- All available with SSL or Euro Faceplate; more options for the customer to meet their growing demands
- Best In Class Visibility; low placed knee plate, low cross tube, and hydraulic hoses are now positioned inside loader arms
- Bearing Box Redesigned for improved side-to-side movement and providing better stability
- Tapered Rear Arms for improved visibility and styling
- All loaders include boom, 4-bar bucket linkage, bucket level indicator and parking stands
- Available with third function, soft ride, bale forks/spears, and plenty of bucket options

WORKMASTER™ SERIES TRACTOR SPECIFICATIONS

MODEL		WORKMASTER 50	WORKMASTER 60	WORKMASTER 70
Engine				
Make		FPT - R753		
# Cylinders / Aspiration		3, Turbocharged intercooler		
Displacement	cu. in. (L)	136 (2.2)	136 (2.2)	136 (2.2)
Engine horsepower	hp (kW)	53	60	70
PTO horsepower	hp (kW)	45	51	62
Rated speed	(rpm)	2600	2600	2600
Fuel type		Direct injection / Common rail		
Air filter		2 - stage	2 - stage	2 - stage
Standards		4B final	4B final	4B final
Fuel tank capacity	gal (L)	17.2 (65)	17.2 (65)	17.2 (65)
Transmission				
Traction clutch		Dry, 11" (279.4 mm) diameter, organic plate		
BxB synchro shuttle		BFxBR with synchro mesh and epicyclical final drive		
Standard Rear Tire		13.6-28 (R1)	14.9-28 (R1)	14.9-28 (R1)
Optional Rear Tire		18.4-24 (R4), FWD	18.4-24 (R4), FWD	18.4-24 (R4), FWD
Brakes				
Service brakes		Individual mechanically actuated wet disc		
Parking brake		Engage hand-lever, press brake pedals to lock service brakes		
Rear axle				
Rear differential lock		Mechanical foot pedal engagement		
Front axle				
FWD clutch engagement		Mechanical, FWD		
Hydraulics				
System type		Open center, fixed displacement gear pump		
Implement pump capacity	gpm(lpm)	12 (45)	12 (45)	12 (45)
Steering & services system	gpm(lpm)	5.5 (21)	5.5 (21)	5.5 (21)
Total maximum tractor flow	gpm(lpm)	17.5 (66)	17.5 (66)	17.5 (66)
Remote valves		Open center, float detent available for #1, #2 FID or DIA		
Rear 3-point hitch				
Category		I/VI	I/VI	I/VI
Position control, draft sensing		One lever, standard mechanical draft control		
OECD lift capacity @ 24" behind ball ends	lbs (kg)	2,701 (1225)	2,701 (1225)	2,701 (1225)
PTO Type				
Rear PTO		Independent Standard 540 RPM, Optional 540E		
Electrical				
Alternator		75	75	75
Battery capacity (cold cranking amps)		720	720	720
Lighting		2 hi/lo beam halogen headlights, flashing safety lights / turn signals		
Accessory power outlets		Standard equipment, 7-pin implement outlet		
General				
ROPS		Foldable		
Dimensions				
Shipping length	in (mm)	129.5 (3290), 2WD / 134.0 (3404), FWD		
Shipping width	in (mm)	67.5 (1714)	67.5 (1714)	67.5 (1714)
Shipping height	in (mm)	91.2 (2317)	91.2 (2317)	91.2 (2317)
Shipping weight	lbs (kg)	4,442 (2015) 2WD / 5,059 (2995) FWD		

Note: Specifications are stated in accordance with industry standards or recommended practices, where applicable.

This Sales Education Document has been published for worldwide circulation. The availability of some models and equipment builds vary according to the country in which the equipment is used and sold. The illustrations and text may include optional equipment and accessories and may not include all standard equipment. For more information about the current standard and optional equipment offered for your sales area, consult the published price listings.



Important

CNH Global N.V. reserves the right to change product specifications without notice and without incurring any obligation relating to such changes.